

High Visibility Devices for Curb and Drop Inlets

Dandy Products are designed to trap sediment and filter runoff. Each product is manufactured in the USA with high visibility orange monofilament fabric for maximum visibility and efficiency.

Dandy Curb for curb inlet protection

The Dandy Curb is for curb inlets without grates. The two-part system includes a tube and front pouch that should be filled with clean stone. The pouch pre-filters debris and the tube traps sediment and other pollutants.

Common Sizes

6'	14'
8'	16'
10'	18'
12'	20'



Measure for Success

Dandy Products are designed to fit most grates. We stock the most common grate sizes and can special order any other size.

Dandy Curb

The Dandy Curb should have one foot of overlap at the end of each side. Measure your gutter opening and add two feet.

Dandy Sack and Inlet Sentry

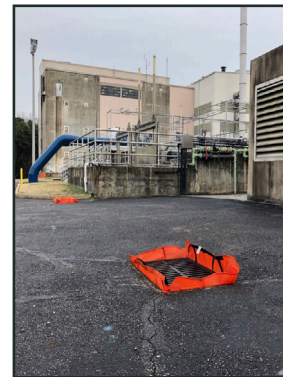
Measure the length and width of the grate. The Dandy Sack and Inlet Sentry are designed to fit those exact dimensions.

Dandy Sack for drop inlet protection

The Dandy Sack attaches below the grate and catches sediment and pollutants as they flow in. The Dandy Sack can withstand traffic which means it is well suited for post-construction protection. To install, simply remove the grate, attach the bag with the straps, and replace.

Common Sizes

24" x 24"	30" x 30"	32" x 32"
24" x 36"	30" x 36"	36" x 36"



Inlet Sentry for drop inlet protection

The Inlet Sentry is an above grate drop inlet device. To install, wrap the Inlet Sentry around the grate with the elastic band then set it back down on the structure. On top of the Inlet Sentry is a ring wrapped in nonwoven geotextile fabric. This ring pre-filters debris and controls overflow to prevent contamination during a rain event.

Common Sizes

24" x 24"	36" x 36"
30" x 30"	42" x 42"
32" x 32"	48" x 48"

Not sure which Drop Inlet Device?

Dandy Sacks allow uninhibited flow while Inlet Sentrys filter and slow the flow.

Dandy Sacks need to be removed and cleaned while Inlet Sentrys can be cleaned in place.

